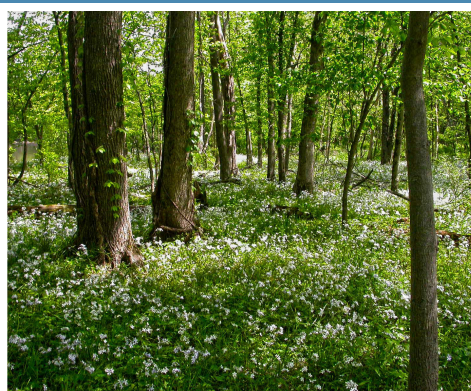




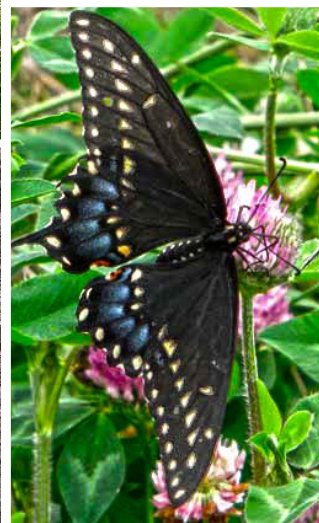
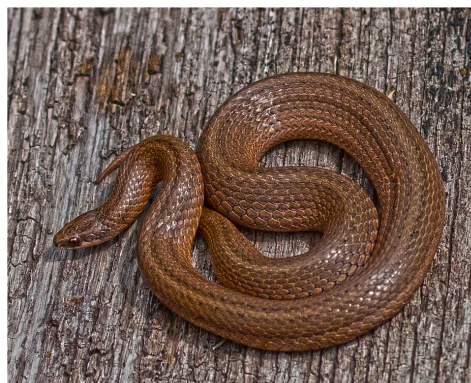
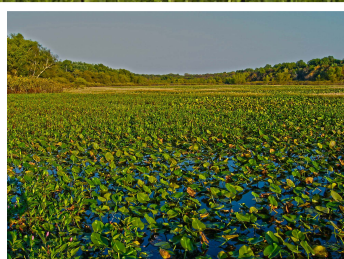
Illinois Clean Energy
community foundation

Illinois Clean Energy Community Foundation Natural Areas Land Acquisition Grants 2002-2012

Updated as of February 2018



NATURAL
AREAS



2002



- 1 **Sunnyside Park Water Quality Project**, *DuPage County*
5 acres, fee simple acquisition
Wetland and forested floodplain habitat along the East Branch DuPage River in Bloomingdale
DuPage County Department of Development and Environmental Concerns
- 2 **Potawatomi Woods Forest Preserve**, *DeKalb County*
300 acres, fee simple acquisition
Forested floodplain along the South Branch of the Kishwaukee River protected by the *Natural Land Institute*
DeKalb County Forest Preserve District
- 3 **Richard R. and Jean W. Graber Grasslands Land and Water Reserve**, *Jasper County*
40 acres, fee simple acquisition / registered Illinois Land and Water Reserve
Grassland habitat part of the larger 4,101-acre bi-county protected area
Illinois Audubon Society
- 4 **Piasa Creek Watershed Project**, *Jersey County*
94 acres, fee simple acquisition
Multiple parcel acquisition of wetland and stream buffer habitat along Mississippi River tributary
Great Rivers Land Trust
- 5 **Garfield Farm addition**, *Kane County*
94 acres, fee simple acquisition
Restored prairie and wetland habitat that buffer existing natural areas
Campton Historic Agricultural Lands
- 6 **Kankakee Sands addition**, *Kankakee County*
137 acres, fee simple acquisition
Multiple parcel acquisition of savanna and wetland habitat near the Indiana border
The Nature Conservancy
- 7 **Camp River Trails**, *LaSalle County*
67 acres, easement acquisition / registered Illinois Land and Water Reserve
Upland and floodplain forest, seeps and sandstone bluffs along the Fox River protected by
The Conservation Foundation
Girl Scouts of Whispering Oaks Council
- 8 **Ryan Wetland and Sand Prairie**, *Lee County*
44 acres, fee simple acquisition / registered Illinois Land and Water Reserve
Sand bottom wetlands and prairie
Lee County Soil and Water Conservation District
- 9 **Kyte River Bottoms Land and Water Reserve**, *Ogle County*
235 acres, fee simple acquisition / registered Illinois Land and Water Reserve
Forest at the confluence of the Kyte and Rock Rivers near Oregon
Natural Land Institute
- 10 **Hidden Oaks Conservation Area**, *Will County*
26 acres, fee simple acquisition;
33 acres donated outright
Forest and wetland meadow along the DuPage River protected by the *Forest Preserve District of Will County*
Village of Bolingbrook



Richard R. and Jean W. Graber Grasslands Land and Water Reserve

2003



- 11 **Big Muddy Wetlands addition to Shawnee National Forest**, *Jackson County*
191 acres, fee simple acquisition
Restored wetland habitat along the Big Muddy River protected by *Ducks Unlimited*
U.S. Forest Service
- 12 **Chautauqua Bottoms Preserve**, *Jackson County*
20 acres, fee simple acquisition
Forested floodplain of Little Crab Orchard Creek in Carbondale
Green Earth, Inc.
- 13 **Prairie Ridge State Natural Area addition**, *Jasper County*
196 acres, fee simple acquisition / registered Illinois Land and Water Reserve
Grassland habitat protected by *Illinois Audubon Society*, northwest of 2002 acquisition
Illinois Department of Natural Resources
- 14 **Blackberry Maples Forest Preserve addition**, *Kane County*
66 acres, fee simple acquisition
Sugar Maple woods containing Great Blue Heron rookeries and marsh, prairie and fen habitat
Kane County Forest Preserve District
- 15 **Boone Creek Conservation Area addition**, *McHenry County*
327 acres, fee simple acquisition
Wetlands and oak/hickory woodlands protected by the *McHenry County Conservation Foundation*
McHenry County Conservation District
- 16 **Beaver Island addition to Middle Mississippi River National Wildlife Refuge**, *Randolph County*
243 acres, fee simple acquisition
Forested island on the Mississippi River protected by *Ducks Unlimited*
U.S. Fish and Wildlife Service
- 17 **Shawnee National Forest addition**, *Union County*
152 acres, fee simple acquisition
In-holding along the Hutchins Creek Valley in the Illinois Ozarks protected by *The Nature Conservancy*
U.S. Forest Service
- 18 **Evans-Judge Preserve addition**, *Will County*
168 acres, fee simple acquisition
Savanna, wetlands and floodplain along the south bank of the Kankakee River near complex of protected sites
Forest Preserve District of Will County



Big Muddy Wetlands, Jackson County



Blackberry Maples Forest Preserve
Kane County



- 19 **Bluff Spring Fen Nature Preserve and buffer**, Cook County
89 acres, fee simple acquisition; 77 acres donated outright / A portion of the land (74 acres) is dedicated as Illinois Nature Preserve Diverse wetland complex near the Fox River in Elgin
Forest Preserve District of Cook County

- 20 **Swift Prairie Forest Preserve addition**, DuPage County
2 acres, fee simple acquisition / dedicated Illinois Nature Preserve Buffer
Prairie and wetlands buffering Swift Prairie Nature Preserve near Addison
Forest Preserve District of DuPage County



- 21 **West Chicago Prairie Forest Preserve addition**, DuPage County
3 acres, fee simple acquisition / dedicated Illinois Nature Preserve Buffer
Wetlands to expand and buffer Truitt-Hoff Nature Preserve
Forest Preserve District of DuPage County

- 22 **Kolar Savanna, creation of Iroquois Sands Land and Water Reserve**, Iroquois County
44 acres, fee simple acquisition / registered Illinois Land and Water Reserve
Black oak savanna next to two state-owned INPC sites
U.S. Fish and Wildlife Service

- 23 **Hoover Forest Preserve**, Kendall County
140 acres, fee simple acquisition
Bluffs, ravines and wetlands along the Fox River
Kendall County Forest Preserve District



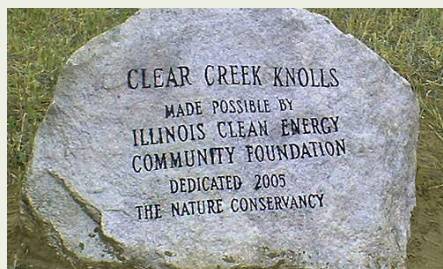
Plum Island Sanctuary
LaSalle County

- 24 **Plum Island Sanctuary**, LaSalle County
46 acres, fee simple acquisition / enrolled Illinois Natural Heritage Landmark
Island in the Illinois River across from Starved Rock providing a foraging base and rest area for bald eagles
Illinois Audubon Society

- 25 **James Family Woods connector parcel**, Livingston County
6 acres, fee simple acquisition
Forested habitat along Indian Creek that provides access to Fugate Woods near Fairbury
Prairie Lands Foundation

- 26 **Wightman Lake addition to Marshall State Fish and Wildlife Area**, Marshall County
415 acres, fee simple acquisition
Restored wetland and bottomland hardwood habitat along the Illinois River protected by Ducks Unlimited
Illinois Department of Natural Resources

- 27 **Fox Bluff Conservation Area**, McHenry County
60 acres, fee simple acquisition
Oak woodland along the Fox River, part of a larger project to purchase the 113-acre former Camp Algonquin protected by McHenry County Conservation Foundation
McHenry County Conservation District



- 28 **Salt Lick Point Land and Water Reserve**, Monroe County
440 acres, easement acquisition / registered Illinois Land and Water Reserve
Hilltop prairie, bluffs and forests overlooking the Mississippi bottomlands, protected by Illinois Audubon Society
Village of Valmeyer



Pearl Crescent at Bluff Spring Fen
Cook County

- 29 **Clear Creek Knolls addition to Nachusa Grasslands**, Ogle and Lee County
973 acres, fee simple acquisition;
287 acres, easement donation
Grassland, savanna and woodland habitat
The Nature Conservancy

- 30 **Monticello's Sangamon River Land and Water Reserve**, Piatt County
153 acres, fee simple acquisition / registered Illinois Land and Water Reserve
Riparian habitat along the Sangamon River
City of Monticello



- 31 **Rockwood Island addition to Middle Mississippi River National Wildlife Refuge**, Randolph County
613 acres, fee simple acquisition
Island and side-channel habitat protected by HeartLands Conservancy
U.S. Fish and Wildlife Service

- 32 **Harlem Hills Nature Preserve addition**, Winnebago County
4 acres, fee simple acquisition / dedicated Illinois Nature Preserve Buffer
Gravel hill prairie in Loves Park protected by Natural Land Institute
Illinois Department of Natural Resources



Fox Bluff Conservation Area
McHenry County



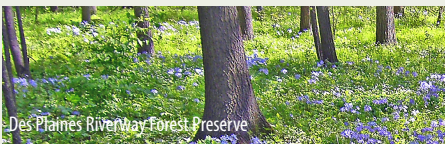
- 33 **Newburg Village Conservation Area**, *Boone County*
103 acres, fee simple acquisition
Wetland habitat along the Kishwaukee River
[Boone County Conservation District](#)
- 34 Plucheman's Slough addition to **Sanganois State Fish and Wildlife Area**, *Cass County*
335 acres, fee simple acquisition
Part of 452-acre wetland complex connecting bottom-land forest to backwater lake habitat at the confluence of the Sangamon and Illinois Rivers, protected by [Ducks Unlimited](#)
Illinois Department of Natural Resources
- 35 **Wapello Land and Water Reserve**, *Jo Daviess and Carroll County*
79 acres, fee simple acquisition / registered Illinois Land and Water Reserve
Mesic prairie and upland forest along Apple River
[Jo Daviess Conservation Foundation](#)
- 36 **Cache River State Natural Area** addition, *Johnson County*
40 acres, fee simple acquisition
Upland forest protected by the [Trust for Public Land](#)
Illinois Department of Natural Resources
- 37 **Kankakee Sands** addition, *Kankakee County*
98 acres, fee simple acquisition
Black oak and dry savanna near previous acquisitions at Kankakee Sands
[The Nature Conservancy](#)
- 38 **Shady Rest Land and Water Reserve**, *Piatt County*
28 acres, fee simple acquisition / registered Illinois Land and Water Reserve
Upland and floodplain forest along the Sangamon River
[Piatt County Forest Preserve District](#)
- 39 **Big Grand Pierre Land and Water Reserve**, *Pope County*
334 acres, fee simple acquisition / registered Illinois Land and Water Reserve
Wooded in-holding at Shawnee National Forest protected by [Illinois Audubon Society](#)
Illinois Department of Natural Resources
- 40 Rockwood Island addition to **Middle Mississippi River National Wildlife Refuge**, *Randolph County*
599 acres, fee simple acquisition
Bottomland forest and wetlands protected by [HeartLands Conservancy](#)
U.S. Fish and Wildlife Service
- 41 **Protected Mississippi River Bluffs**, *St. Clair County*
2 acres, fee simple acquisition
Multiple parcel acquisition of river bluffs in East St. Louis
[St. Clair County Greenspace Foundation](#)
- 42 **Pecatonica River Valley easements**, *Winnebago County*
230 acres, easement acquisition
Bottomland forests and wetlands south of Rockton
Private Landowners / [Natural Land Institute](#)
- 43 **Letcher Basin Preserve**, *Woodford County*
151 acres, fee simple acquisition;
52 acres, easement donation
Tallgrass prairie, wetland and creek habitat along the Mackinaw River
[ParkLands Foundation](#)



Letcher Basin Preserve



- 44 **Cypress Creek National Wildlife Refuge** addition, *Alexander County*
244 acres, fee simple acquisition
Wetlands along the Cache River protected by [Shawnee Resource Conservation and Development, Inc.](#)
U.S. Fish and Wildlife Service
- 45 Mahoney addition to **Des Plaines Riverway**, *DuPage County*
9 acres, fee simple acquisition / dedicated Illinois Nature Preserve
Forested habitat along the Des Plaines River
[Forest Preserve District of DuPage County](#)
- 46 Anderson Savanna addition to **Iroquois Sands Land and Water Reserve**, *Iroquois County*
22 acres, fee simple acquisition / registered Illinois Land and Water Reserve
Black oak savanna connecting two state-owned INPC sites to Indiana's Willow Slough State Fish and Wildlife Area protected by [Friends of the Kankakee](#)
U.S. Fish and Wildlife Service
- 47 **Oakland Nature Preserve**, *Jackson County*
12 acres, fee simple acquisition
Woodlands that buffer high-quality prairie and wildlife corridor in Carbondale
[Green Earth, Inc.](#)
- 48 **Grunwald Farm Forest Preserve**, *Kane County*
160 acres, fee simple acquisition
Woodland, wetland and fen habitat along Blackberry Creek near 2003 acquisition, part of a larger project to create a new 224-acre preserve
[Kane County Forest Preserve District](#)
- 49 **Reservation Woods**, *Kendall County*
12 acres, fee simple acquisition
Woodland habitat at the center of a 100-acre forest protected by [The Conservation Foundation](#)
Forest Preserve District of Kendall County
- 50 **Funks Grove**, *McLean County*
453 acres, fee simple acquisition / registered Illinois Land and Water Reserve
Old-growth forest, portions of Timber Creek, and prairie grove along Sugar Creek, part of a larger 1,100-acre protected natural area
[Sugar Grove Foundation](#)
- 51 Cranfill addition to **Coffeen Lake State Fish and Wildlife Area**, *Montgomery County*
320 acres, fee simple acquisition
Restored prairie, wetland and forest providing pheasant and quail habitat, protected by [Pheasants Forever](#)
Illinois Department of Natural Resources
- 52 Rockwood Island addition to **Middle Mississippi River National Wildlife Refuge**, *Randolph County*
31 acres, fee simple acquisition
Bottomland in-holdings protected by [HeartLands Conservancy](#)
U.S. Fish and Wildlife Service
- 53 **Nieman Marsh**, *Winnebago County*
38 acres, fee simple acquisition/easement
Deep marsh, sedge meadow and wetlands, northeast of Pecatonica
[Natural Land Institute](#) / [Ducks Unlimited](#)
- 54 Kropp-Schulenberg Prairie addition to **Riverview Farmstead Preserve**, *Will County*
10 acres, fee simple acquisition
Prairie and woodland habitat extending the DuPage River Greenway
[Forest Preserve District of Will County](#)



Des Plaines Riverway Forest Preserve

2002-2006



Between 2002 and 2006, ICECF awarded grants to support the acquisition of **7,911** acres and **737** acres of conservation easements, which generated additional donations of **110** acres outright and **339** acres of conservation easements.

The map shows the locations of the **54** sites protected.

19 of the sites contain an Illinois Natural Areas Inventory (INAI) site. INAI sites designate high-quality natural areas.

19 of the sites have additional or special protection through registration as a Land and Water Reserve, dedication as a Nature Preserve or enrollment as a Natural Heritage Landmark with the Illinois Nature Preserves Commission. Established in 1963, the Commission preserves and protects natural areas and endangered species.

Map Legend

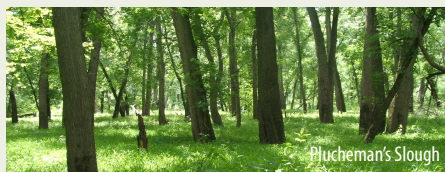
- 2002
- 2003
- 2004
- 2005
- 2006

0 12.5 25 50 75 100 Miles





- 55 **Piscasaw Fen Conservation Area**, *Boone County*
80 acres, fee simple acquisition
Sedge meadow, wetland and fen habitat
[Boone County Conservation District](#)
- 56 **Boyle Woods**, *Cass County*
50 acres, fee simple acquisition
Old-growth forest and mesic upland habitat
[Friends of the Sangamon Valley](#)
- 57 Plucheman's Slough addition to **Sanganois State Fish and Wildlife Area**, *Cass County*
80 acres, fee simple acquisition
Part of 452-acre wetland complex connecting bottom-land forest to backwater lake at confluence of Sangamon and Illinois Rivers, protected by [Ducks Unlimited](#)
Illinois Department of Natural Resources
- 58 **Sangamon River Forest Preserve**, *Champaign County*
160 acres, fee simple acquisition
Floodplain forest and oak savanna, south of Fisher
[Champaign County Forest Preserve District](#)
- 59 **Lovetts Pond State Natural Area** addition, *Jackson County*
60 acres, fee simple acquisition
Wetland habitat, near Shawnee National Forest, protected by [The Nature Conservancy](#)
Illinois Department of Natural Resources
- 60 **Palisades Preserve**, *Jersey County*
420 acres, fee simple acquisition / dedicated Illinois Nature Preserve
Oak and hickory forest, hill prairie and limestone cliffs overlooking the Mississippi, Missouri and Illinois River confluences, protected by [Great Rivers Land Trust](#)
Lewis and Clark Community College Foundation
- 61 **Casper Bluff Land and Water Reserve**, *Jo Daviess County*
52 acres, fee simple acquisition / registered Illinois Land and Water Reserve
Oak savanna, hill prairies and bluffs overlooking the Mississippi River
[Jo Daviess Conservation Foundation](#)
- 62 **Kankakee Sands** addition, *Kankakee County*
43 acres, fee simple acquisition
Multiple parcel acquisitions of black oak savanna near previous acquisitions at Kankakee Sands
[The Nature Conservancy](#)
- 63 **Millbrook South Forest Preserve**, *Kendall County*
301 acres, fee simple acquisition
River corridor and woodlands along the Fox River
[Kendall County Forest Preserve District](#)
- 64 Silver Creek addition to **Fel-Pro RRR Conservation Area**, *McHenry County*
58 acres, fee simple acquisition / dedicated Illinois Nature Preserve
Oak savanna and wetland fen habitat along Silver Creek
[McHenry County Conservation District](#)
- 65 Tawny Oaks addition to **Singing Woods**, *Peoria County*
28 acres, fee simple acquisition
Woodlands, meadows and rare hill prairies contiguous with larger 1,100-acre state-dedicated Nature Preserve
[Peoria Park District](#)
- 66 **Cypress Creek National Wildlife Refuge** addition, *Pulaski County*
145 acres, fee simple acquisition
Cache River wetlands protected by
[American Land Conservancy](#)
U.S. Fish and Wildlife Service
- 67 **Milan Bottoms Preserve**, *Rock Island County*
93 acres, fee simple acquisition
Mississippi floodplain forest near Mark Twain National Fish and Wildlife Refuge
[Natural Land Institute](#)
- 68 **Protected Mississippi River Bluffs**, *St. Clair County*
5 acres, fee simple acquisition
Bluff habitat buffering adjacent forest, near 2005 site
[St. Clair County Greenspace Foundation](#)
- 69 **Cave Spring Cave Natural Heritage Landmark**, *Union County*
68 acre, fee simple acquisition / enrolled Illinois Natural Heritage Landmark
Woodland in-holding in Shawnee National Forest protected by [The Nature Conservancy](#)
U.S. Forest Service
- 70 **Stone Bridge Forest Preserve**, *Winnebago County*
27 acres, fee simple acquisition
River corridor and riparian habitat along Kinnickinnick Creek
[Winnebago County Forest Preserve District](#)
- 71 **Hidden Oaks Conservation Area** addition, *Will County*
3 acres, fee simple acquisition
Forest and meadow in-holding, near 2002 site
[Bolingbrook Park District](#)



- 72 **Kishwaukee Valley Conservation Area**, *Boone County*
40 acres, fee simple acquisition
Wetlands and Kishwaukee River floodplain
[Boone County Conservation District](#)
- 73 Patton Woods addition to **Middle Fork River Forest Preserve**, *Champaign County*
5 acres, fee simple acquisition
Historic oak/hickory forest including some old-growth remnants, near the Middle Fork of the Vermilion River
[Champaign County Forest Preserve District](#)
- 74 **Pyles Fork Preserve**, *Jackson County*
135 acres, fee simple acquisition
Forested floodplain along tributary of Crab Orchard Creek connected to public park in Carbondale, protected by the [American Land Conservancy](#)
[Green Earth, Inc](#)
- 75 **Palisades Preserve buffer**, *Jersey County*
334 acres, fee simple acquisition
Oak/hickory forested bluffs and ridge-top prairies overlooking the Mississippi River, contiguous with 2007 acquisition
[Great Rivers Land Trust](#)
- 76 **Horseshoe Mound**, *Jo Daviess County*
40 acres, fee simple acquisition
Oak savanna and grassland on top of 240-foot geologic mound east of Galena
[Jo Daviess Conservation Foundation](#)
- 77 **Brunner Family Forest Preserve**, *Kane County*
146 acres, fee simple acquisition
Fen, seeps, bluffs and woods along a one-mile stretch of the Fox River, part of a larger project to purchase 700-acre farm connecting two existing forest preserves
[Kane County Forest Preserve District](#)
- 78 **Arlington Wetlands**, *Madison County*
74 acre, fee simple acquisition / easement
Wetlands near confluence of Illinois and Missouri Rivers
[Madison County Government Planning and Development Department](#) / [HeartLands Conservancy](#)
- 79 **Yonder Prairie**, *McHenry County*
40 acres, fee simple acquisition / dedicated Illinois Nature Preserve
Wet prairie habitat, part of the 103-acre protected core of the diverse West Woodstock Prairie
[The Land Conservancy of McHenry County](#)



2008 *continued*



- 80 **Waller Tract**, *McLean County*
90 acres, fee simple acquisition
Forest, wetland and grassland connected to park-land surrounding Evergreen Lake and managed by
Prairielands Preservation Foundation
[City of Bloomington](#)
- 81 **Grove Creek Forest Preserve**, *Stephenson County*
7 acres, fee simple acquisition
Buffer habitat along Grove Creek connected to 71 acres of prairie in Winnebago County (Project 83), protected by the [Natural Land Institute](#)
Winnebago County Forest Preserve
- 82 **Donohue Grove Preserve** addition, *Will County*
71 acres, fee simple acquisition
Mature oak/hickory forest bisected by Fork Creek
[Forest Preserve District of Will County](#)
- 83 **Grove Creek Forest Preserve**, *Winnebago County*
67 acres, fee simple acquisition
Dry and mesic prairie bisected by Grove Creek, protected along with the 7 acres in Stephenson County (Project 81) to create a new preserve
[Winnebago County Forest Preserve District](#)
- 84 **Kilbuck Bluffs Forest Preserve**, *Winnebago County*
59 acres, fee simple acquisition
Floodplain forest along the Kilbuck Creek and Kishwaukee River
[Winnebago County Forest Preserve District](#)
- 85 **Ottertail Marsh**, *Winnebago County*
131 acres, easement acquisition
Floodplain forest, sloughs, wetland and marsh habitat along one-mile stretch of Sugar River, west of Rockton
Private Landowner / [Natural Land Institute](#)

2009



- 86 Plucheman's Slough addition to **Sanganois State Fish and Wildlife Area**, *Cass County*
40 acres, fee simple acquisition
Part of 452-acre wetland complex connecting bottom-land forest to backwater lake habitat at confluence of Sangamon and Illinois Rivers, protected by
[Ducks Unlimited](#)
Illinois Department of Natural Resources
- 87 **Sangamon Bay easement**, *Cass County*
412 acres, easement acquisition
Wetland and floodplain forest habitat near Plucheman's Slough
Private Landowner / [Ducks Unlimited](#)
- 88 **Apple River Canyon State Park** addition, *Jo Daviess County*
139 acres, fee simple acquisition / registered Illinois Land and Water Reserve
Oak/hickory forest, grasslands and dolomite bluffs along one mile of Apple River, protected by the [Natural Land Institute](#), which generated Land and Water registration of an additional 85 acres of adjacent hardwood forest owned by Boy Scouts camp
Illinois Department of Natural Resources
- 89 **Eagle's Nest Land and Water Reserve**, *Jo Daviess County*
118 acres, fee simple acquisition / registered Illinois Land and Water Reserve
Woodland and wetland habitat along the county's southern stretch of the Apple River
[Jo Daviess Conservation Foundation](#)
- 90 **Kankakee Sands** addition, *Kankakee County*
40 acres, fee simple acquisition
Multiple parcel acquisition of black oak savanna habitat connecting previously protected land
[The Nature Conservancy](#)
- 91 **Franklin Creek Headwaters**, *Lee County*
86 acres, fee simple acquisition
To-be-restored prairie and 1,000 feet of exposed cliffs and woods along Franklin Creek, connecting Franklin Grove to the state natural area and Nachusa Grasslands via public trail
[Franklin Creek Conservation Association](#)
- 92 **Rocky Fork Creek Corridor**, *Madison County*
34 acres, fee simple acquisition
Multiple parcel acquisition of riparian habitat, part of Network to Freedom Underground Railroad site
[Great Rivers Land Trust](#)
- 93 **Sweeney Woods**, *McLean County*
77 acres, fee simple acquisition
Restored floodplain forest, creating 115 acres of contiguous habitat along the Mackinaw River
[ParkLands Foundation](#)
- 94 **Forest Glen Preserve** addition, *Vermilion County*
108 acres, fee simple acquisition
Restored prairie in-holding protected by
[Pheasants Forever](#)
Vermilion County Conservation District



2010



- 95 **Ipsen Road Conservation Area**, *Boone County*
186 acres, fee simple acquisition
Bottomland hardwoods, floodplains and wet meadows near BCCD's LIB Conservation Area
[Boone County Conservation District](#)
- 96 Point Pleasant Wetland addition to **Middle Fork River Forest Preserve**, *Champaign County*
40 acres, fee simple acquisition
To-be-restored wetland and upland prairie in the northeast corner of the county
[Champaign County Forest Preserve District](#)
- 97 **Dolton Avenue Prairie**, *Cook County*
24 acres, fee simple acquisition
Wet and wet-mesic prairie connected, via the planned Cal Sag Trail, to a string of other Illinois Natural Areas Inventory sites including the Calumet City Prairie
[Forest Preserve District of Cook County](#)
- 98 **Kankakee Sands** addition, *Iroquois County*
24 acres, fee simple acquisition
Multiple parcel acquisitions of black oak savannas and sand flatwoods near Iroquois Sands Land and Water Reserve
[Friends of the Kankakee](#)
- 99 **Galena Gateway Park**, *Jo Daviess County*
100 acres, fee simple acquisition / easement
Savanna, grassland and to-be-restored bluffland prairie at the eastern entrance to the City of Galena, stretching from Horseshoe Mound (2008 grant) to the Galena River, protected by [Jo Daviess Conservation Foundation](#)
City of Galena / [JDCF](#)
- 100 **Cache River State Natural Area** addition, *Johnson County*
40 acres, fee simple acquisition
Forested wetlands along the Cache River protected by
[American Land Conservancy](#)
Illinois Department of Natural Resources



- 101 **Forever Fields**, *Knox County*
1,000 acres, fee simple acquisition
Grassland connected to existing Pheasant Habitat Area
Pheasants Forever, IDNR
- 102 Orland Prairie addition to **Nachusa Grasslands**,
Ogle County
347 acres, fee simple acquisition
Woodland and grassland habitat,
near 2004 acquisition
The Nature Conservancy
- 103 **Sand Ridge Prairie**, *Ogle County*
83 acres, fee simple acquisition
Sand prairie near Kyte River Bottoms, south of Oregon
Prairie Preservation Society of Ogle County
- 104 **Loy Prairie Land and Water Reserve**, *Marion County*
216 acres, fee simple acquisition / registered Illinois
Land and Water Reserve
To-be-restored prairie buffering Twelve-Mile Prairie INAI
site and connected to Prairie Ridge State Natural Area
Illinois Audubon Society
- 105 **Kidd Lake Marsh State Natural Area** addition,
Monroe County
94 acres, fee simple acquisition
Prairie marsh and wetland habitat in bottomlands
below Fults Hill Prairie Nature Preserve, protected by
HeartLands Conservancy
Illinois Department of Natural Resources
- 106 **White Rock**, *Monroe County*
476 total acres, fee simple acquisition / registered
Illinois Land and Water Reserve (168 acres) / dedicated
Illinois Nature Preserve (306 acres)
Upland forest, hill prairies and limestone glade,
overlooking the Mississippi bottomlands
HeartLands Conservancy, Clifftop
- 107 **Lockport Prairie Nature Preserve**, *Will County*
264 acres, fee simple acquisition / dedicated Illinois
Nature Preserve
Rare dolomite prairie on the Des Plaines River
Forest Preserve District of Will County
- 108 **Stone Bridge Forest Preserve** addition,
Winnebago County
10 acres, fee simple acquisition
Woodlands along Kinnikinnick Creek, connected to
2007 acquisition
Winnebago County Forest Preserve District
- 109 Jenkins/Van Zelst Marsh addition to **Woodford County
State Fish and Wildlife Area**, *Woodford County*
237 acres, fee simple acquisition
Restorable marsh, wetland fen, floodplain forest and
upland bluff forest overlooking Illinois River Valley on
Upper Peoria Lakes, protected by *Ducks Unlimited*
Illinois Department of Natural Resources
- 110 **Wetlands Reserve Enhancement Program
enrollment**, *Woodford County*
83 acres, easement acquisition
Wetlands in Upper Peoria Lake protected by *Ducks
Unlimited* in coordination with the Natural Resources
Conservation Service
Private Landowner / USWREP

2011



- 111 **Piscasaw Fen Conservation Area** addition,
Boone County
137 acres, fee simple acquisition
Multiple parcel acquisition of oak savanna, forested
wetlands and riparian corridor, adding to
2007 acquisition
Boone County Conservation District
- 112 **Embarras Ridges Land and Water Reserve**,
Coles County
141 acres, fee simple acquisition / registered Illinois
Land and Water Reserve
Upland forest spread across broad ridges and steep
ravines adjacent to Warbler Woods Nature Preserve
Grand Prairie Friends
- 113 **Prairie Oaks Forest Preserve**, *DeKalb County*
43 acres, fee simple acquisition
Restored natural area with oak savanna, wetland, fen,
stream and forest habitat in northern DeKalb County
DeKalb County Forest Preserve District
- 114 **East Branch Forest Preserve** addition, *DuPage County*
10 acres, fee simple acquisition
In-holding to large (500+ acres) preserve in Glendale
Heights that is part of the East Branch
DuPage River greenway
Forest Preserve District of DuPage County
- 115 **Kankakee Sands** addition,
Iroquois County
13 acres, fee simple acquisition
Black oak savannas and sand flatwoods, part of project
to connect Iroquois County State Wildlife Area and
Willow Slough State Fish and Wildlife Area
Friends of the Kankakee
- 116 William G. Wells Nature Preserve Buffer addition to the
Dokum Mskoda Sedge Meadow Nature Preserve,
Lake County
8 acres, fee simple acquisition / dedicated Illinois Nature
Preserve Buffer
Acquisition of buffer parcel critical to the dedication of
the adjoining 93-acre Nature Preserve by Illinois
Nature Preserves Commission
Conserve Lake County
- 117 Hurd addition to **Franklin Creek State Natural Area**,
Lee County
40 acres, fee simple acquisition
Private in-holding to Franklin Creek State Natural Area
containing hardwood forest, a segment of the creek
and exposed bedrock cliffs protected by
Franklin Creek Conservation Association
Illinois Department of Natural Resources
- 118 **Winding Creek Conservation Area** addition,
McHenry County
43 acres, fee simple acquisition
Oak savanna in-holding along the Nippersink Creek in
northern part of the county
McHenry County Conservation District
- 119 Chillicothe Bottoms, a site of the **Middle Illinois
River Project**, *Peoria County*
232 acres, fee simple acquisition
Part of a multi-parcel grant that protected 1,882 acres of
wetland habitat along the Illinois River in two priority
locations - from Henry to Peoria and from Bath to
Beardstown
Ducks Unlimited
- 120 **Deer Run Forest Preserve** addition,
Winnebago County
81 acres, fee simple acquisition
Upland forest and to-be-restored prairie in-holding and
buffer habitat along the Kishwaukee River
Winnebago County Forest Preserve District
- 121 **Pecatonica Woodlands Preserve**, *Winnebago County*
145 acres, fee simple acquisition;
70 acres, easement acquisition
Bottomland forest, sedge meadow and open slough
habitat along the Pecatonica River
Natural Land Institute

2007-2011



Between 2007 and 2011, ICECF awarded grants to support the acquisition of **7,459** acres and **781** acres of conservation easements, which generated additional donations of **93** acres of conservation easements.

The map shows the locations of the **67** sites protected.

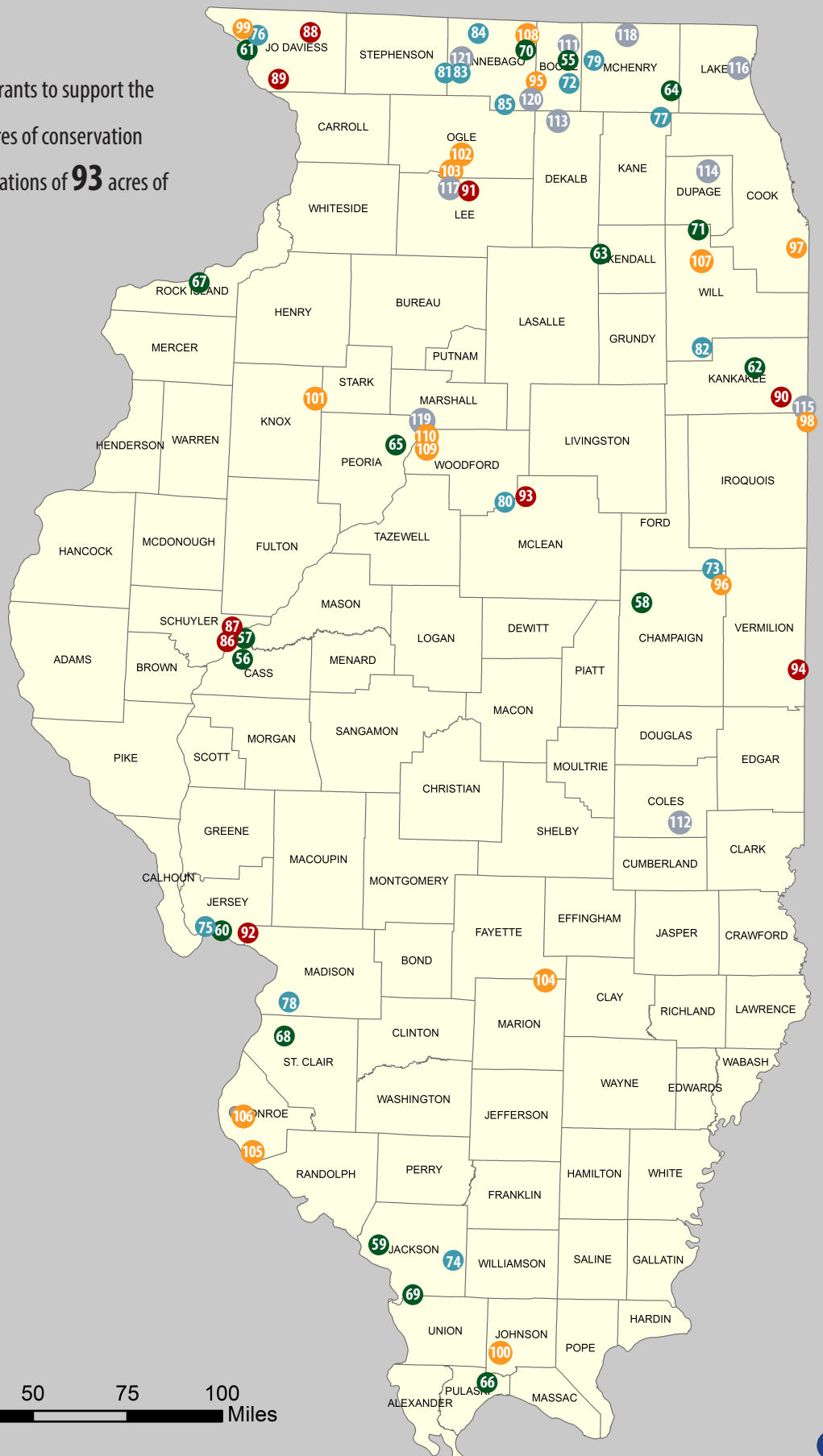
24 of the sites contain an Illinois Natural Areas Inventory (INAI) site. INAI sites designate high-quality natural areas.

12 of the sites have additional or special protection through registration as a Land and Water Reserve, dedication as a Nature Preserve or enrollment as a Natural Heritage Landmark with the Illinois Nature Preserves Commission. Established in 1963, the Commission preserves and protects natural areas and endangered species.

Map Legend

- 2007
- 2008
- 2009
- 2010
- 2011

0 12.5 25 50 75 100 Miles





122 **Ballard Farm Conservation Area**, *Boone County*

295 acres, fee simple acquisition

Multiple parcel acquisitions of wetland and stream habitat as part of a larger plan to protect and acquire land in the Kishwaukee River Watershed. The first, a 213-acre parcel of forested land, lies at the confluence of the Beaver Creek and Kishwaukee River, just north of the Ipsen Conservation Area. The second, an 82-acre parcel, consists of upland oak savanna and glacial bluffs overlooking wet meadow habitat along the Piscasaw Creek.

Boone County Conservation District

123 **Middle Fork River Forest Preserve** addition, *Champaign County*

5 acres, fee simple acquisition

Riparian forest and floodplain habitat adjacent to the Middle Fork River Forest Preserve (near 2010 acquisition). The wooded natural area adds to the District's 4.6 miles of protected land on the Middle Fork of the Vermillion River, which is a high-quality, biologically rich stream, and connects it to additional lands of conservation interest.

Champaign County Forest Preserve District

124 **Kankakee Sands connector parcels**, *Iroquois County*

32 acres, fee simple acquisition

Multiple parcel acquisitions of black oak savanna, sand prairie, remnant flatwoods and restorable flatwoods as part of a larger project to connect Iroquois State Wildlife Area, Hooper Branch Savanna Nature Preserve and Willow Slough Fish and Wildlife Area -the first two of which are in Illinois and the latter in Indiana. The target parcels contain 243 native plant species as well as several species of concern, including 8 state-listed plants and 2 state-listed animals, the regal fritillary butterfly and ornate box turtle. The regal fritillary (*Speyeria idalia*) can be found in tall-grass prairies or wet grassy areas in the central U.S., however, due to habitat loss and fragmentation is now listed as threatened in Illinois.

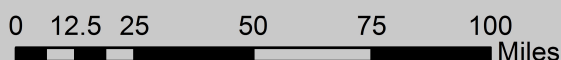
Friends of the Kankakee

125 **Kankakee Sands Ecosystem Preserve** additions, *Kankakee County*

331 acres, fee simple acquisition

Multiple parcel acquisitions of black oak savanna and sand prairie habitat as part of the larger project to expand the bi-state preserve spanning 34,000 acres across Indiana and Illinois. These parcels are connected to land previously acquired by TNC and include multiple INAI sites. The Kankakee Sands Ecosystem Preserve contains the highest concentration of high-quality black oak savannas in the Midwest.

The Nature Conservancy



**126 Amboy Marsh, Lee County**

272 acres, fee simple acquisition

Wetland complex interspersed with black oak sand savannas, sedge meadows and dry sand prairie in the Green River Conservation Opportunity Area on the north edge of the Bloomington Moraine. The highest quality sand pond remaining in Illinois can be found here as well as several rare, threatened and endangered species.

Illinois Audubon Society

127 Willow Branch Conservation Area, Macon County

65 acres, fee simple acquisition

Savanna, forest and to-be-restored prairie along Willow Branch that will lead to a 2.75 mile long greenway. Protection of this property also protects the high quality and biological diversity of the stream.

Macon County Conservation Foundation, Macon County Conservation District

128 Swamp White Oak addition to Coral Woods Conservation Area, McHenry County

10 acres, fee simple acquisition

Partially wooded parcel with old growth forest connected to the northern boundary of the 775-acre Coral Woods Conservation Area. The mature oak woodlands contain native Swamp White Oak, which are rare in McHenry County. Coral Woods Conservation Area is one of seven remaining 100+ acre blocks of woods in McHenry County.

McHenry County Conservation District

129 Hotchkiss Prairie addition to Nachusa Grasslands, Ogle County

100 acres, fee simple acquisition

Grassland in-holding in the heart of the overall design of the 3,150-acre Nachusa Grasslands preserve, adding to previous TNC acquisitions including the Orland Prairie and Clear Creek Knolls.

The Nature Conservancy

130 LCF Sangamon River Corridor Reserve, Piatt County

108 acres, fee simple acquisition

Floodplain forest and forest slopes along a one-mile stretch of the Sangamon River near Monticello. The acquisition helps further efforts to create a wildlife corridor linking over 5,300 acres of existing protected areas that border and buffer the river in Champaign and Piatt counties. The site provides habitat for freshwater mussels (over 17 different species have been found here) as well as forest interior birds and other wildlife. Protecting the parcel's existing forest and re-establishing native hardwoods on 59 acres of former agricultural fields will protect water quality of the INAI-listed Sangamon River and benefit efforts to safeguard the recharge area for the Mahomet Aquifer.

The Land Conservation Foundation

This booklet shows the location of land purchased with the help of 126 Natural Areas Land Acquisition grants awarded between 2002 and 2012. It was originally published in May of 2013 and has been updated to reflect current property names and to adjust for actual acres purchased. There was a decrease from the original estimate to the actual total acres protected as several projects were in progress at the time of printing. One was not completed altogether and a few other purchased less acres (and therefore received a smaller grant payment) than planned. The information presented here is current as of February 2018.

The sites range from privately-owned preserves that are open to the public, to county forest preserves and conservation areas, to national forests and wildlife refuges. A small number are private conservation easements. Noted as "additions," many projects purchased land that was added to existing preserves and wildlife areas. Others acquired property to create new preserves. All had some connection to previously protected land at the time of purchase and many sites have been expanded upon since the grant awards were made. Four of the grants are represented by two dots each as they added land to two different natural areas.

The 126 grants awarded represent a total commitment of \$47.7 million by the Foundation, which leveraged an estimated \$95.5 million in matching funds from grantees and other sources. Altogether the projects have acquired and protected over 20,000 acres of natural areas and wildlife habitat.

The project sites are organized by year and listed alphabetically by county in the following format:

1. **Name of Natural Area, County**
2. Acres Protected by Grant Project, type of acquisition / Additional Protection (i.e. easement, Illinois Land and Water Reserve registration, etc.)
3. Habitat, Location and Grantee (if other than current owner)
4. Landowner / easement holder

Line 1 lists the current name of the property.

Line 2 lists the total number of acres protected by the grant project, not the total number of acres included in the preserve or natural area at the time of publication. The type of acquisition describes how the grantee acquired the land. Additional protection refers to actions taken to restrict the future use of the land, ensuring the permanent protection of its natural habitat. Some natural areas have been voluntarily enrolled, contingent upon approval of the Illinois Nature Preserves Commission (INPC), into the Illinois Nature Preserves System and are so described as either dedicated Illinois Nature Preserves, registered Land and Water Reserves or enrolled Natural Heritage Landmarks. Others are subject to an easement agreement between the landowner and a private land trust that permanently restricts the use of the land to protect the conservation value.

Line 3 describes the habitat protected. The Grantee is listed in color after the words "protected by," if different from the current owner. Some grantees have transferred property purchased with grant support to another conservation organization or agency to own and manage (subject to a conservation easement or deed restriction that protects the wildlife habitat in perpetuity).

Line 4 lists the current landowner and easement holder. Grantee organization(s) are in color.

Land Acquisition is the main focus of the Foundation's Natural Areas program, with grant funds awarded to help cover the direct cost, or sales price, of the land, as in the case of the 126 projects protecting natural areas at the 130 sites featured in this document. In addition to these sites, Foundation grants have assisted with the creation of the Openlands Lakeshore Preserve, the donation of conservation easements protecting an estimated 930 acres of natural habitat in McHenry County and the completion of a limited number of capacity building and planning projects designed to ultimately facilitate the acquisition and protection of natural areas.

Cover Photos (left-right): Spiderwort at Nachusa- *The Nature Conservancy*; Pecatonica River Valley easements (2005)- *Jerry Paulson*; Sugar Prairie- *Robert Shaw*, *Wild Perceptions*; Lovetts Pond (2007)- *The Nature Conservancy*; Smooth Earth Snake at Embarras Ridges (2011)- *Rob Kanter*; Eastern Black Swallowtail at Grunwald Farm (2006)- *Forest Preserve District of Kane County*; Kidd Lake (2010)- *HeartLands Conservancy*; White Rock (2010)- *Tom Rollins*, *ThomasRollinsPhotography*

Back Cover (left-right): Kankakee Sands area; Evans-Judge Preserve (2003)- *Forest Preserve District of Will County*; Sandhill Crane at Yonder Prairie (2008)- *Scott Kuykendall*; Prairie Oaks (2011)- *Dekalb County Forest Preserve District*; Horseshoe Mound Park (2008)- *Richard Mattas*



Illinois Clean Energy

community foundation

2 North LaSalle St.
Suite 1140
Chicago, IL 60602
312.372.5191 (t)
312.372.5190 (f)
www.illinoiscleanenergy.org

Trustees of the Foundation

as of February 2018

Peter P. Peters
Natural Areas Committee Chairman

Jerry Adelmann
Maggie Crotty
Henry Gianvecchio
John McDermott
Sean Vinck

Current property names and acreage information for grant project sites are as of February 2018

